

Date:	15th September 2016
Subject:	Domestic Violence and Violence against Women and Girls Report
Author:	Victoria Roberts, Interim DV/VAWG Commissioner Victoria.roberts@bromley.gov.uk Tel: 0208 313 4290
Approval/Information:	Information

1.0 Overview

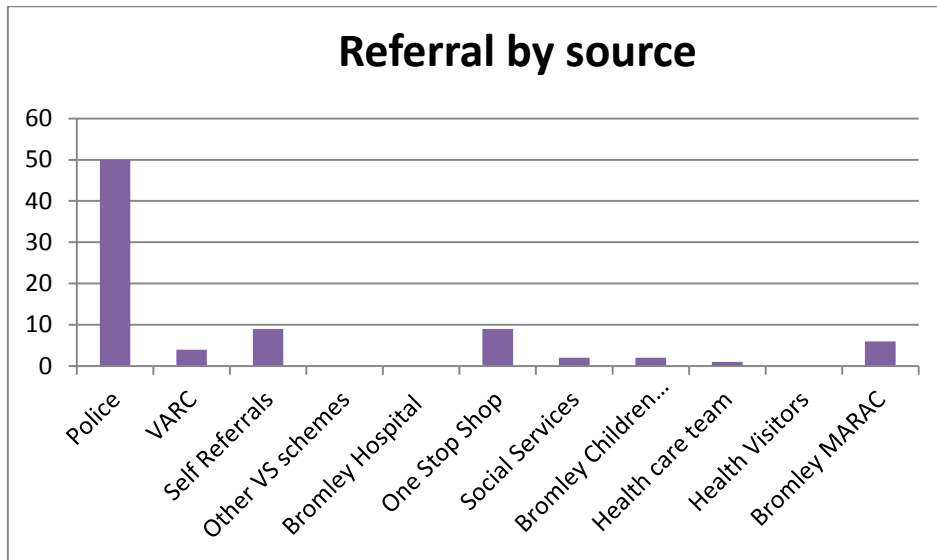
1.1 The purpose of this report is to provide information to strategic partners on key Domestic Violence (DV) and Violence against Women and Girls (VAWG) in the London Borough of Bromley in quarter one.

2.0 Q1 Performance and Data - Bromley Domestic Violence Advocacy Project

2.1 The VAWG Commissioner has worked closely with the current service provider to formulate a performance matrix and data collection tools to assist in the identification of gaps and emerging themes within this service. The organisation has been requested to provide a quarterly report (Victim Support) that will include the following information:

- Referral by Source
- MARAC Referrals
- Victim Age
- Level of Support
- Postcode Hotspots
- Crime Type

2.2 The project received 190 client referrals this period; this figure represents a 35.7% increase from the previous quarter; 18 of the clients supported by the project this quarter were repeat victims.



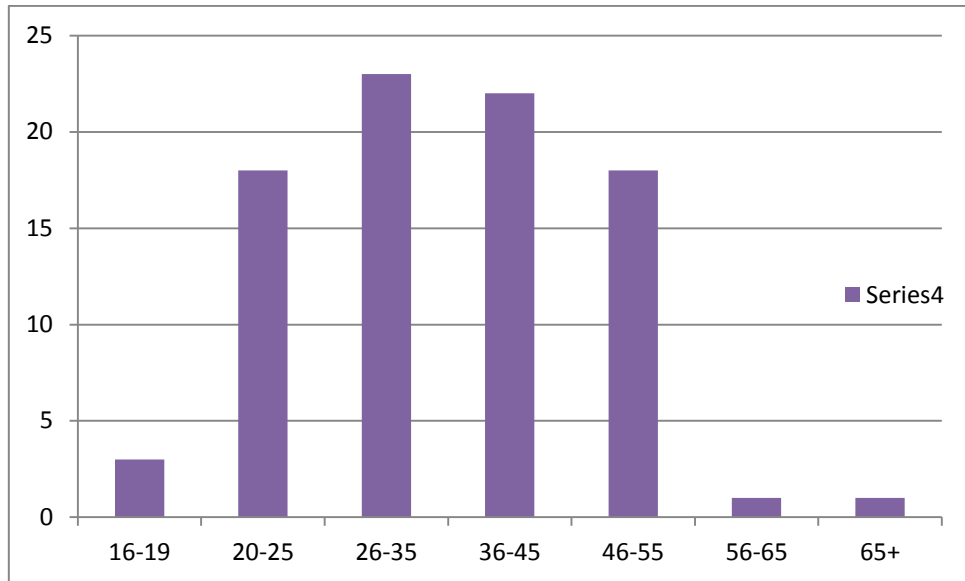
2.3 As shown above the main referral source is direct referrals from the police. Two full time IDSVAs (Independent Domestic and Sexual Violence Advisors) are based at Bromley Police Station.

2.4 The Bromley One Stop Shop is facilitated by the Community IDSVAs who offers immediate crisis intervention to victims. The One Stop Shop provides support and advice from Bromley MPS, housing, a family law solicitor and representatives from Victim Support and Bromley and Croydon Women’s Aid.

2.5 Referral risk levels and MARAC Referrals:

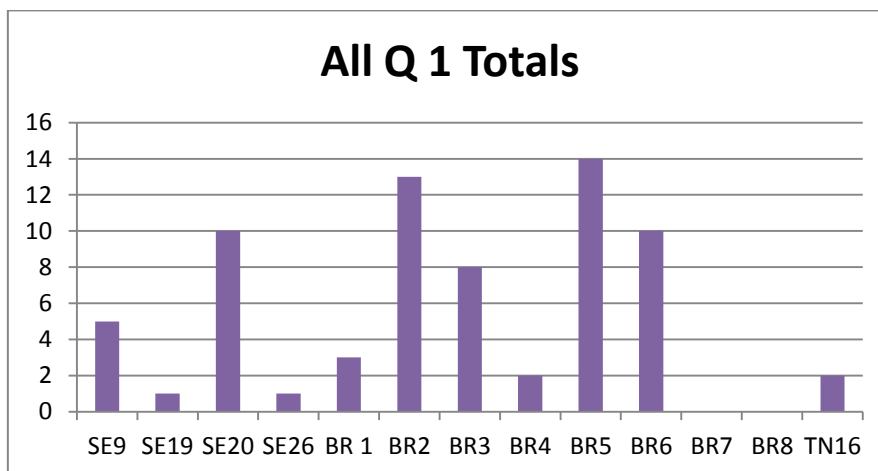
RISK LEVEL	APRIL	MAY	JUNE	TOTAL
HIGH/MARAC RISK (14+)	8	5	6	19
MEDIUM RISK (10 – 13)	6	11	13	30
STANDARD RISK (0-9)	1	2	4	7
RIC NOT COMPLETED	9	13	17	39

2.6 Victim age range:



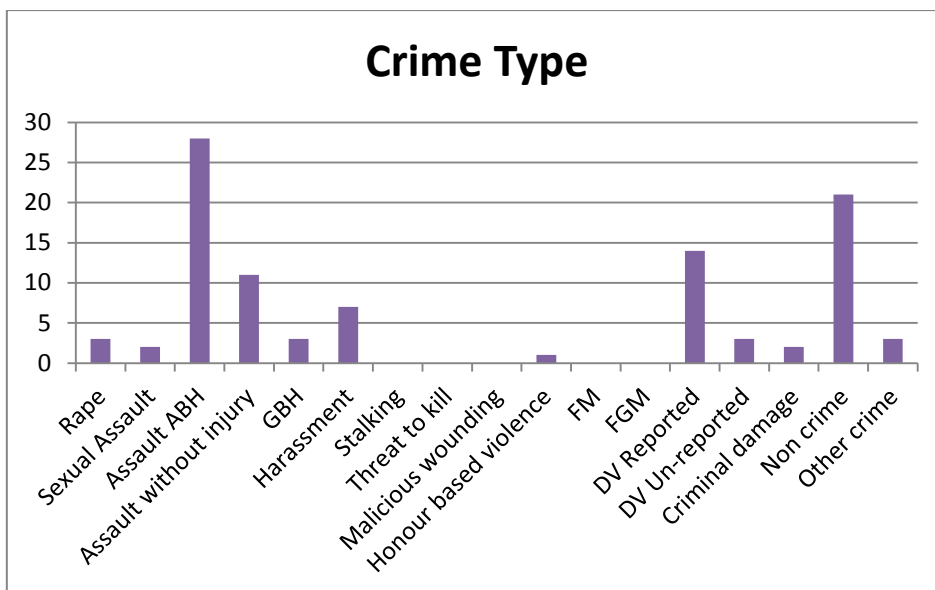
The chart shows the age demographic of domestic violence victims being supported by the project is between 20 - 55. These are likely related to most women being independent and making informed decisions based on the options available to them and having more accessibility to support services.

2.7 Victim postcodes:



The Postcode domestic violence/abuse Hotspot chart demonstrates that the majority of clients supported by the project live in the proximities of BR5 at 19.7%, BR2 18.3%, and, CE20 and BR6 at 14%.

2.8 The crime type chart shows that Assault and ABH are the most significant disclosure/dynamics of abuse to the Project at 29.4%, which reflects domestic violence as a phenomenon which is self-identifiable by escalation of abusive behaviour that results in violence.



3.0 The Violence against Women and Girls Strategy 2016-2019

3.1 A London Borough of Bromley VAWG Strategy (2016-2019) has now reached first draft stage. When completed the new VAWG Strategy will incorporate the domestic violence and VAWG strategic aims from the Safer Bromley Partnership Strategic Assessment report and compliment HM Government strategy (Ending Violence Against Women and Girls Strategy 2016-2020) by incorporating the overarching themes of Prevention, Provision, Partnership and Protection.

3.2 The draft VAWG strategy has been circulated to members of the Board prior to this meeting. If any members of the Board have questions or comments please contact the VAWG Commissioner by the 30th September 2016. Once the strategy has been circulated, feedback collected and amendments made, the strategy will be recirculated to members for ratification and sign off by the Safer Bromley Partnership.